

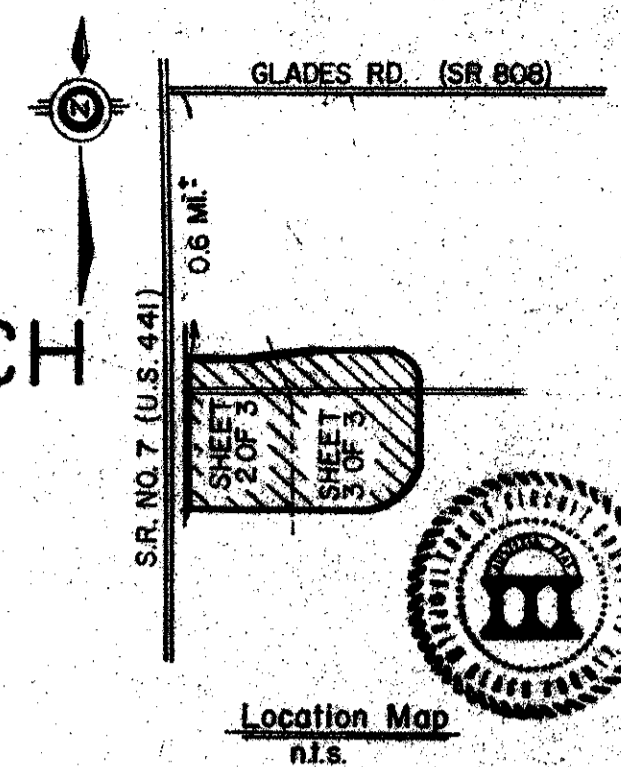
RAINBERRY WEST OF BOCA PLAT NO. 1

A PORTION OF WHICH IS A PART OF RAINBERRY OF WEST BOCA P.U.D.

SITUATE IN SECTION 19, TOWNSHIP 47 SOUTH, RANGE 42 EAST, PALM BEACH COUNTY, FLORIDA, BEING A REPLAT OF A PORTION OF BLOCK 78, OF THE PALM BEACH FARMS COMPANY PLAT NO. 3 (PB. 2, PAGES 45-54)

NOVEMBER, 1988

SHEET 1 OF 3



STATE OF FLORIDA COUNTY OF PALM BEACH THIS PLAT WAS FILED FOR RECORD THIS 13th DAY OF DECEMBER, 1988 AND DULY RECORDED IN PLAT BOOK 137 ON PAGES 137 AND 138-139 JOHN B. DUNKLE, CLERK BY Barbara L. Platt, S.C. CIRCUIT COURT SEAL

DEDICATION

KNOW ALL MEN BY THESE PRESENTS THAT THE HILLHAVEN CORPORATION, A DELAWARE CORPORATION, AUTHORIZED TO DO BUSINESS IN FLORIDA; RAINBERRY PARK INC., A FLORIDA CORPORATION; PALMETTO INVESTMENT COMPANY, LTD., A FLORIDA LIMITED PARTNERSHIP; NME HOSPITALS, INC., A DELAWARE CORPORATION, AUTHORIZED TO DO BUSINESS IN FLORIDA, OWNERS OF THE LAND SHOWN HEREON AS RAINBERRY WEST OF BOCA PLAT NO. 1, SITUATE IN SECTION 19, TOWNSHIP 47 SOUTH, RANGE 42 EAST, PALM BEACH COUNTY, FLORIDA, BEING A REPLAT OF A PORTION OF BLOCK 78, OF PALM BEACH FARMS COMPANY'S PLAT NO. 3, AS RECORDED IN PLAT BOOK 2, PAGES 45-54, OF THE PUBLIC RECORDS OF PALM BEACH COUNTY, FLORIDA, BEING MORE PARTICULARLY DESCRIBED AS FOLLOWS:

OWNERS OF THE LAND SHOWN HEREON AS RAINBERRY WEST OF BOCA PLAT NO. 1, SITUATE IN SECTION 19, TOWNSHIP 47 SOUTH, RANGE 42 EAST, PALM BEACH COUNTY, FLORIDA, BEING A REPLAT OF A PORTION OF BLOCK 78, OF PALM BEACH FARMS COMPANY'S PLAT NO. 3, AS RECORDED IN PLAT BOOK 2, PAGES 45-54, OF THE PUBLIC RECORDS OF PALM BEACH COUNTY, FLORIDA, BEING MORE PARTICULARLY DESCRIBED AS FOLLOWS: BEGINNING AT THE NORTHWEST CORNER OF RAINBERRY PARK PLAT NO. 1, AS RECORDED IN PLAT BOOK 49, ON PAGES 28 AND 29, OF SAID PUBLIC RECORDS, THENCE N89°37'02"E, ALONG THE PERIMETER OF SAID RAINBERRY PARK PLAT NO. 1, A DISTANCE OF 1041.57 FEET TO THE BEGINNING OF A CURVE, HAVING A RADIUS OF 317.13 FEET FROM WHICH A RADIAL LINE BEARS N00°22'58"W; THENCE EASTERLY ALONG THE ARC OF SAID CURVE, SUBTENDING A CENTRAL ANGLE OF 09°28'24", A DISTANCE OF 52.44 FEET; THENCE S09°51'22"E A DISTANCE OF 90.00 FEET TO THE BEGINNING OF A CURVE, HAVING A RADIUS OF 407.13 FEET FROM WHICH A RADIAL LINE BEARS N09°51'22"W; THENCE NORTHEASTERLY, DEPARTING FROM SAID PERIMETER AND ALONG THE ARC OF SAID CURVE, SUBTENDING A CENTRAL ANGLE OF 35°31'36", A DISTANCE OF 252.45 FEET; THENCE N44°37'02"E A DISTANCE OF 178.00 FEET TO THE BEGINNING OF A CURVE, HAVING A RADIUS OF 407.13 FEET FROM WHICH A RADIAL LINE BEARS N45°22'58"W; THENCE NORTHERLY ALONG THE ARC OF SAID CURVE, SUBTENDING A CENTRAL ANGLE OF 45°00'00", A DISTANCE OF 319.78 FEET; THENCE N00°22'58"W A DISTANCE OF 355.92 FEET TO THE BEGINNING OF A CURVE, HAVING A RADIUS OF 395.00 FEET FROM WHICH A RADIAL LINE BEARS S89°37'02"E; THENCE NORTHERLY AND WESTERLY ALONG THE ARC OF SAID CURVE, SUBTENDING A CENTRAL ANGLE OF 90°00'00", A DISTANCE OF 620.48 FEET; THENCE S89°37'02"W A DISTANCE OF 223.09 FEET TO THE BEGINNING OF A CURVE, HAVING A RADIUS OF 438.81 FEET FROM WHICH A RADIAL LINE BEARS S00°22'58"E; THENCE WESTERLY ALONG THE ARC OF SAID CURVE, SUBTENDING A CENTRAL ANGLE OF 28°29'44", A DISTANCE OF 218.24 FEET; THENCE S81°07'18"W A DISTANCE OF 198.25 FEET TO THE BEGINNING OF A CURVE, HAVING A RADIUS OF 348.81 FEET FROM WHICH A RADIAL LINE BEARS N28°52'42"W; THENCE WESTERLY ALONG THE ARC OF SAID CURVE, SUBTENDING A CENTRAL ANGLE OF 28°29'44", A DISTANCE OF 173.48 FEET; THENCE S89°37'02"W A DISTANCE OF 415.41 FEET TO THE WEST LINE OF SAID BLOCK 78; THENCE S00°53'32"E, ALONG SAID WEST LINE, A DISTANCE OF 1003.96 FEET TO THE POINT OF BEGINNING.

LESS AND EXCEPT THE FOLLOWING: COMMENCING AT THE SAID NORTHWEST CORNER OF RAINBERRY PARK PLAT NO. 1, THENCE N00°53'32"W ALONG THE WEST LINE OF SAID BLOCK 78, A DISTANCE OF 556.25 FEET TO THE POINT OF BEGINNING. FROM THE POINT OF BEGINNING THENCE AND CONTINUING ALONG SAID WEST LINE, N00°53'32"W A DISTANCE OF 357.89 FEET TO THE SOUTHERLY RIGHT-OF-WAY LINE OF CENTRAL PARK BLVD. NORTH; THENCE DEPARTING FROM SAID WEST LINE AND FOLLOWING SAID RIGHT-OF-WAY LINE, N89°37'02"E A DISTANCE OF 414.61 FEET TO THE BEGINNING OF A CURVE HAVING A RADIUS OF 438.81 FEET, FROM WHICH A RADIAL LINE BEARS N00°22'58"W; THENCE EASTERLY ALONG THE ARC OF SAID CURVE, SUBTENDING A CENTRAL ANGLE OF 28°29'44" A DISTANCE OF 218.24 FEET; THENCE DEPARTING FROM SAID RIGHT-OF-WAY LINE, S28°52'42"E A DISTANCE OF 268.91 FEET; THENCE S00°22'58"E A DISTANCE OF 136.33 FEET; THENCE S89°06'28"W A DISTANCE OF 671.89 FEET; THENCE S00°53'32"E A DISTANCE OF 31.50 FEET; THENCE S89°06'28"W A DISTANCE OF 77.50 FEET TO THE POINT OF BEGINNING.

AREA SUMMARY:

Table with 2 columns: Description, Area. Overall Legal Description Area: 38.850 Acres. Less-Out Parcel: 5.512 Acres. Total Platted Area: 33.338 Acres.

HAVE CAUSED THE SAME TO BE SURVEYED AND PLATTED AS SHOWN HEREON AND DO HEREBY DEDICATE AS FOLLOWS:

- 1. TRACT A AS SHOWN HEREON IS HEREBY DEDICATED TO THE PALM BEACH COUNTY BOARD OF COUNTY COMMISSIONERS FOR THE PERPETUAL USE OF THE PUBLIC FOR PROPER PURPOSES.
2. THE UTILITY EASEMENTS AS SHOWN HEREON ARE HEREBY DEDICATED IN PERPETUITY FOR THE CONSTRUCTION AND MAINTENANCE OF UTILITY AND CABLE TELEVISION FACILITIES.
3. THE DRAINAGE EASEMENTS WITHIN THE TRACTS SHOWN HEREON ARE HEREBY DEDICATED IN PERPETUITY TO, AND SHALL BE THE PERPETUAL MAINTENANCE OBLIGATION OF, THE OWNERS OF RECORD OF SAID TRACTS, THEIR SUCCESSORS AND ASSIGNS, FOR THE CONSTRUCTION AND MAINTENANCE OF DRAINAGE FACILITIES, WITHOUT RECOURSE TO PALM BEACH COUNTY, HOWEVER PALM BEACH COUNTY SHALL HAVE THE RIGHT, BUT NOT THE OBLIGATION, TO MAINTAIN THAT PORTION OF THE DRAINAGE SYSTEM, ENCOMPASSED BY THIS PLAT, WHICH IS ASSOCIATED WITH THE DRAINAGE OF PUBLIC ROADS.

- 4. TRACT B IS HEREBY DEDICATED TO, AND SHALL BE THE PERPETUAL MAINTENANCE OBLIGATION OF NME HOSPITALS, INC., ITS SUCCESSORS AND ASSIGNS, FOR COMMERCIAL DEVELOPMENT AND OTHER PROPER PURPOSES, WITHOUT RECOURSE TO PALM BEACH COUNTY.
5. TRACTS D AND E ARE HEREBY DEDICATED TO AND SHALL BE THE PERPETUAL MAINTENANCE OBLIGATION OF PALMETTO INVESTMENT COMPANY, LTD., ITS SUCCESSORS AND ASSIGNS, FOR COMMERCIAL DEVELOPMENT AND OTHER PROPER PURPOSES, WITHOUT RECOURSE TO PALM BEACH COUNTY.
6. THE LIMITED ACCESS EASEMENTS (L.A.E.'S) SHOWN HEREON ARE HEREBY DEDICATED TO THE PALM BEACH COUNTY BOARD OF COUNTY COMMISSIONERS FOR CONTROL AND JURISDICTION OVER ACCESS RIGHTS.
7. THE WATER MANAGEMENT TRACTS SHOWN HEREON, ARE HEREBY DEDICATED AS FOLLOWS: TRACTS 1, 2A AND 2B TO RAINBERRY AT WEST BOCA PROPERTY OWNERS ASSOC. ITS SUCCESSORS AND ASSIGNS.

FOR WATER MANAGEMENT, DRAINAGE, AND OTHER PROPER PURPOSES, WITHOUT RECOURSE TO PALM BEACH COUNTY. THE 20' MAINTENANCE EASEMENT AND THE 20' ACCESS EASEMENT ARE HEREBY DEDICATED TO RAINBERRY AT WEST BOCA PROPERTY OWNERS ASSOCIATION, A FLORIDA NOT-FOR-PROFIT CORPORATION, ITS SUCCESSORS AND ASSIGNS, FOR LAKE MAINTENANCE, ACCESS AND OTHER PROPER PURPOSES, WITHOUT RECOURSE TO PALM BEACH COUNTY. THE WATER MANAGEMENT TRACTS, THE 20' MAINTENANCE EASEMENT AND THE 20' ACCESS EASEMENT SHALL BE THE PERPETUAL MAINTENANCE OBLIGATION OF SAID RAINBERRY AT WEST BOCA PROPERTY OWNERS ASSOCIATION, ITS SUCCESSORS AND ASSIGNS, WITHOUT RECOURSE TO PALM BEACH COUNTY. HOWEVER PALM BEACH COUNTY SHALL HAVE THE RIGHT, BUT NOT THE OBLIGATION, TO MAINTAIN THAT PORTION OF THE DRAINAGE SYSTEM, ENCOMPASSED BY THIS PLAT, WHICH IS ASSOCIATED WITH THE DRAINAGE OF PUBLIC ROADS.

IN WITNESS WHEREOF, RAINBERRY PARK INC., A FLORIDA CORPORATION, HAS CAUSED THESE PRESENTS TO BE SIGNED BY ITS PRESIDENT AND ATTESTED TO BY ITS SECRETARY AND ITS CORPORATE SEAL TO BE AFFIXED HERETO BY AND WITH THE AUTHORITY OF ITS BOARD OF DIRECTORS, THIS 22nd DAY OF March, 1988.

ATTEST: Marian Pearlman Nease, Secretary; Roy Flack, President.

ACKNOWLEDGEMENT STATE OF FLORIDA COUNTY OF PALM BEACH BEFORE ME PERSONALLY APPEARED ROY FLACK AND MARIAN PEARLMAN NEASE, TO ME WELL KNOWN AND KNOWN TO ME TO BE THE INDIVIDUALS DESCRIBED IN AND WHO EXECUTED THE FOREGOING INSTRUMENT AS PRESIDENT AND SECRETARY OF RAINBERRY PARK INC., A FLORIDA CORPORATION, AND ACKNOWLEDGED TO AND BEFORE ME THAT THEY EXECUTED SAID INSTRUMENT AS SUCH OFFICERS OF SAID CORPORATION, AND THAT THE SEAL AFFIXED HERETO IS THE CORPORATE SEAL OF SAID CORPORATION, AND THAT SAID INSTRUMENT IS THE FREE ACT AND DEED OF SAID CORPORATION.

IN WITNESS WHEREOF, DELRAY HEALTH ASSOCIATES, INC., A FLORIDA CORPORATION, THE GENERAL PARTNER OF PALMETTO INVESTMENT COMPANY, LTD., A FLORIDA LIMITED PARTNERSHIP, HAS CAUSED THESE PRESENTS TO BE SIGNED BY ITS PRESIDENT AND ATTESTED TO BY ITS SECRETARY AND ITS CORPORATE SEAL TO BE AFFIXED HERETO BY AND WITH THE AUTHORITY OF ITS BOARD OF DIRECTORS, THIS 22nd DAY OF March, 1988.

ATTEST: Marian Pearlman Nease, Secretary; Roy Flack, President.

ACKNOWLEDGEMENT STATE OF FLORIDA COUNTY OF PALM BEACH BEFORE ME PERSONALLY APPEARED ROY FLACK AND MARIAN PEARLMAN NEASE, TO ME WELL KNOWN AND KNOWN TO ME TO BE THE INDIVIDUALS DESCRIBED IN AND WHO EXECUTED THE FOREGOING INSTRUMENT AS PRESIDENT AND SECRETARY OF DELRAY HEALTH ASSOCIATES, INC., A FLORIDA CORPORATION, THE GENERAL PARTNER OF PALMETTO INVESTMENT COMPANY, LTD., A FLORIDA LIMITED PARTNERSHIP, AND ACKNOWLEDGED TO AND BEFORE ME THAT THEY EXECUTED SAID INSTRUMENT AS SUCH OFFICERS OF SAID CORPORATION, AND THAT THE SEAL AFFIXED HERETO IS THE CORPORATE SEAL OF SAID CORPORATION, AND THAT IT WAS AFFIXED HERETO BY DUE AND REGULAR CORPORATE AUTHORITY, AND THAT SAID INSTRUMENT IS THE FREE ACT AND DEED OF SAID CORPORATION.

IN WITNESS WHEREOF, AMERICAN SAVINGS AND LOAN ASSOCIATION, OF FLORIDA, A FLORIDA CORPORATION, HAS CAUSED THESE PRESENTS TO BE SIGNED BY ITS VICE PRESIDENT AND ATTESTED TO BY ITS ASSISTANT SECRETARY AND ITS CORPORATE SEAL TO BE AFFIXED HERETO BY AND WITH THE AUTHORITY OF ITS BOARD OF DIRECTORS THIS 19th DAY OF MAY, 1988.

ATTEST: Mercedes Somexllan, Assistant Secretary; Joseph P. Rado, Vice President.

IN WITNESS WHEREOF, NME HOSPITALS, INC., A DELAWARE CORPORATION, AUTHORIZED TO DO BUSINESS IN FLORIDA, HAS CAUSED THESE PRESENTS TO BE SIGNED BY ITS SENIOR VICE PRESIDENT AND ATTESTED TO BY ITS ASSISTANT SECRETARY AND ITS CORPORATE SEAL TO BE AFFIXED HERETO BY AND WITH THE AUTHORITY OF ITS BOARD OF DIRECTORS, THIS 15th DAY OF May, 1988.

ATTEST: M.E. NISKAY, Asst. Secy; Barry Schochet, Sr. V.Pres.

ACKNOWLEDGEMENT STATE OF FLORIDA COUNTY OF HILLSBOROUGH BEFORE ME PERSONALLY APPEARED BARRY SCHOCHET AND M.E. MC KAY, TO ME WELL KNOWN AND KNOWN TO ME TO BE THE INDIVIDUALS DESCRIBED IN AND WHO EXECUTED THE FOREGOING INSTRUMENT AS SENIOR VICE PRESIDENT AND ASSISTANT SECRETARY OF NME HOSPITALS, INC., A DELAWARE CORPORATION, AUTHORIZED TO DO BUSINESS IN FLORIDA, AND ACKNOWLEDGED TO AND BEFORE ME THAT THEY EXECUTED SAID INSTRUMENT AS SUCH OFFICERS OF SAID CORPORATION, AND THAT THE SEAL AFFIXED HERETO IS THE CORPORATE SEAL OF SAID CORPORATION, AND THAT IT WAS AFFIXED HERETO BY DUE AND REGULAR CORPORATE AUTHORITY, AND THAT SAID INSTRUMENT IS THE FREE ACT AND DEED OF SAID CORPORATION.

WITNESS MY HAND AND OFFICIAL SEAL THIS 4th DAY OF May, 1988. MY COMMISSION EXPIRES: 2-14-92

IN WITNESS WHEREOF, THE HILLHAVEN CORPORATION, A DELAWARE CORPORATION, AUTHORIZED TO DO BUSINESS IN FLORIDA, HAS CAUSED THESE PRESENTS TO BE SIGNED BY ITS PRESIDENT AND ATTESTED TO BY ITS SECRETARY AND ITS CORPORATE SEAL TO BE AFFIXED HERETO BY AND WITH THE AUTHORITY OF ITS BOARD OF DIRECTORS THIS 29th DAY OF March, 1988.

ATTEST: Richard P. Adcock, Secretary; Marvin Wilensky, President.

ACKNOWLEDGEMENT STATE OF WASHINGTON COUNTY OF PIERCE BEFORE ME PERSONALLY APPEARED MARVIN WILENSKY AND RICHARD P. ADCOCK, TO ME WELL KNOWN AND KNOWN TO ME TO BE THE INDIVIDUALS DESCRIBED IN AND WHO EXECUTED THE FOREGOING INSTRUMENT AS PRESIDENT AND SECRETARY OF THE HILLHAVEN CORPORATION, A TENNESSEE CORPORATION, AUTHORIZED TO DO BUSINESS IN FLORIDA, AND SEVERALLY ACKNOWLEDGED TO AND BEFORE ME THAT THEY EXECUTED SAID INSTRUMENT AS SUCH OFFICERS OF SAID CORPORATION, AND THAT THE SEAL AFFIXED HERETO IS THE CORPORATE SEAL OF SAID CORPORATION, AND THAT IT WAS AFFIXED HERETO BY DUE AND REGULAR CORPORATE AUTHORITY, AND THAT SAID INSTRUMENT IS THE FREE ACT AND DEED OF SAID CORPORATION.

WITNESS MY HAND AND OFFICIAL SEAL THIS 29th DAY OF March, 1988. MY COMMISSION EXPIRES: 7/1/89

MORTGAGEE'S CONSENT STATE OF FLORIDA COUNTY OF DADE AMERICAN SAVINGS AND LOAN ASSOCIATION, OF FLORIDA, A FLORIDA CORPORATION, HEREBY CERTIFIES THAT IT IS A HOLDER OF MORTGAGES UPON THE PROPERTY HEREON DESCRIBED AND DOES HEREBY JOIN IN AND CONSENT TO THE DEDICATION OF SAID LANDS BY THE OWNERS THEREOF, AS SHOWN HEREON, AND AGREES THAT ITS MORTGAGES WHICH ARE DESCRIBED IN THE FOLLOWING OFFICIAL RECORD BOOKS: 5336 AT PAGE 668, 4687 AT PAGE 1848, 4593 AT PAGE 1304, 4593 AT PAGE 1280, 4585 AT PAGE 489, 4551 AT PAGE 17, 4430 AT PAGE 858, 4356 AT PAGE 282, 4229 AT PAGE 811, 4229, AT PAGE 774, ALL OF THE PUBLIC RECORDS OF PALM BEACH COUNTY, FLORIDA, SHALL BE SUBORDINATED TO SAID DEDICATION.

IN WITNESS WHEREOF, AMERICAN SAVINGS AND LOAN ASSOCIATION, OF FLORIDA, A FLORIDA CORPORATION, HAS CAUSED THESE PRESENTS TO BE SIGNED BY ITS VICE PRESIDENT AND ATTESTED TO BY ITS ASSISTANT SECRETARY AND ITS CORPORATE SEAL TO BE AFFIXED HERETO BY AND WITH THE AUTHORITY OF ITS BOARD OF DIRECTORS THIS 19th DAY OF MAY, 1988.

ATTEST: Mercedes Somexllan, Assistant Secretary; Joseph P. Rado, Vice President.

ACKNOWLEDGEMENT STATE OF FLORIDA COUNTY OF DADE BEFORE ME PERSONALLY APPEARED MERCEDES SOMEILLAN AND JOSEPH P. RADO, TO ME WELL KNOWN AND KNOWN TO ME TO BE THE INDIVIDUALS DESCRIBED IN AND WHO EXECUTED THE FOREGOING INSTRUMENT AS ASSISTANT SECRETARY AND VICE PRESIDENT OF AMERICAN SAVINGS AND LOAN, OF FLORIDA, A FLORIDA CORPORATION, AND SEVERALLY ACKNOWLEDGED TO AND BEFORE ME THAT THEY EXECUTED SAID INSTRUMENT AS SUCH OFFICERS OF SAID CORPORATION, AND THAT THE SEAL AFFIXED HERETO IS THE CORPORATE SEAL OF SAID CORPORATION, AND THAT IT WAS AFFIXED HERETO BY DUE AND REGULAR CORPORATE AUTHORITY, AND THAT SAID INSTRUMENT IS THE FREE ACT AND DEED OF SAID CORPORATION.

WITNESS MY HAND AND OFFICIAL SEAL THIS 19th DAY OF MAY, 1988. MY COMMISSION EXPIRES: 4-15-92

TITLE CERTIFICATION WE, CHICAGO TITLE INSURANCE COMPANY, A TITLE INSURANCE COMPANY DULY LICENSED IN THE STATE OF FLORIDA, DO HEREBY CERTIFY THAT WE HAVE EXAMINED THE TITLE TO THE HEREON DESCRIBED PROPERTY; THAT WE FIND THE TITLE TO THE PROPERTY IS VESTED TO THE HILLHAVEN CORPORATION, A DELAWARE CORPORATION; RAINBERRY PARK INC., A FLORIDA CORPORATION; PALMETTO INVESTMENT COMPANY, LTD., A FLORIDA LIMITED PARTNERSHIP; NME HOSPITALS, INC., A DELAWARE CORPORATION; THAT THE CURRENT TAXES HAVE BEEN PAID; THAT THE PROPERTY IS ENCLUMBERED BY THE MORTGAGES SHOWN HEREON; THAT ALL MORTGAGES ARE SHOWN AND ARE TRUE AND CORRECT, AND THERE ARE NO OTHER ENCUMBRANCES OF RECORD.

CHICAGO TITLE INSURANCE COMPANY DATE: 11/1/88 BY: Ronald J. Shahan, Vice President

SURVEYOR'S CERTIFICATE (FOR SURVEYOR'S NOTES, SEE SHEET 2 OF 3) I HEREBY CERTIFY THAT THE PLAT SHOWN HEREON IS A TRUE AND CORRECT REPRESENTATION OF A SURVEY MADE UNDER MY RESPONSIBLE DIRECTION AND SUPERVISION; THAT SAID SURVEY COMPLIES WITH CHAPTER 211H-8 OF THE FLORIDA ADMINISTRATIVE CODE AND IS ACCURATE TO THE BEST OF MY KNOWLEDGE AND BELIEF; THAT PERMANENT REFERENCE MONUMENTS (P.R.M.'S) HAVE BEEN SET; THAT PERMANENT CONTROL POINTS (C.P.'S) WILL BE SET UNDER GUARANTEES POSTED WITH THE PALM BEACH COUNTY BOARD OF COUNTY COMMISSIONERS FOR THE REQUIRED IMPROVEMENTS; THAT THE SURVEY DATA COMPLIES WITH ALL THE REQUIREMENTS OF CHAPTER 177 OF THE FLORIDA STATUTES, AS AMENDED, AND ORDINANCES OF PALM BEACH COUNTY, FLORIDA.

THIS 28th DAY OF JUNE, 1988. Wesley F. Haas, Professional Land Surveyor Florida Certificate No. 3708

APPROVALS PALM BEACH COUNTY BOARD OF COUNTY COMMISSIONERS PALM BEACH COUNTY, FLORIDA THIS PLAT IS HEREBY APPROVED FOR RECORD THIS 13th DAY OF DECEMBER, 1988. Carol Elmaust, Chair

ATTEST: John B. Dunkle, Clerk; Debra Stewart, Deputy Clerk; County Engineer Herbert F. Kahlert, P.E., County Engineer

THIS INSTRUMENT WAS PREPARED BY MARK E. HUMMEL IN THE OFFICES OF STANLEY/WANTMAN, INC., 2000 LOMBARD STREET, WEST PALM BEACH, FLORIDA 33407. PUD TABLE: TOTAL PLATTED AREA 33.338 AC, ROADS 5.828 AC, BUILDING COVERAGE 7.787 AC, OPEN SPACE 19.723 AC, LOT AREA/FLOOR AREA RATIO 8.068 AC.

STANLEY/WANTMAN, INC. 2000 LOMBARD STREET, WEST PALM BEACH, FL. 33407 (800) 842-7444. DRAWN M.E.H., DATE MAR., 1988, SCALE NONE, DRAWING NO. 83-136PLAT. RAINBERRY WEST OF BOCA PLAT NO. 1.

Handwritten notes: SUBDIVISION - Rainberry West of Boca Plat No. 1, BOOK 67, PLAT NO. 1, AR 83-56, 137, 138, 139, 139A, 139B, 139C, 139D, 139E, 139F, 139G, 139H, 139I, 139J, 139K, 139L, 139M, 139N, 139O, 139P, 139Q, 139R, 139S, 139T, 139U, 139V, 139W, 139X, 139Y, 139Z.

TAZ 783

Handwritten number: 0372.004

Handwritten number: 6/1/87

Handwritten number: 0449